

115
SANSOME



115 SANSOME ST, SAN FRANCISCO, CA 94104



Building Features & Amenities

Building Features

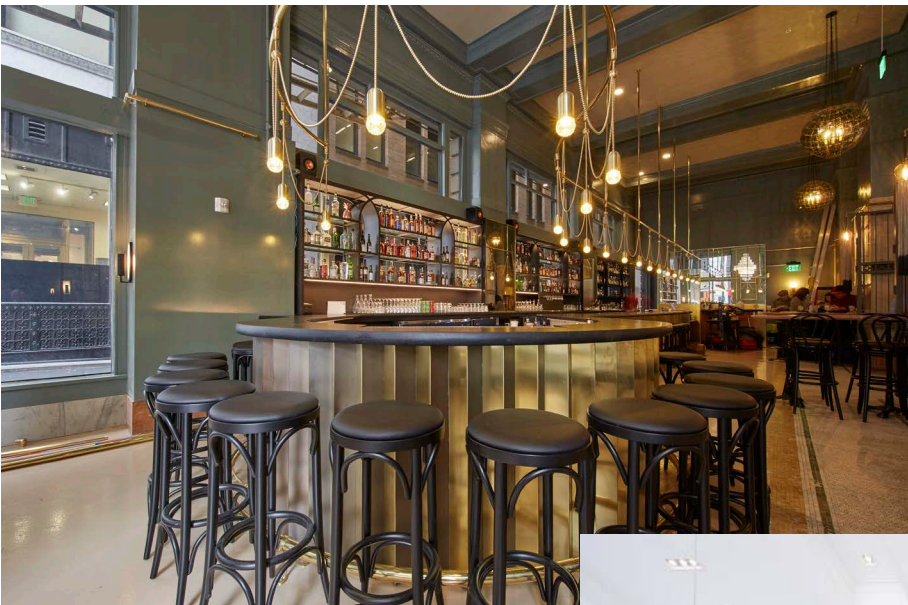
- San Francisco's Premier creative boutique building
- Meticulously renovated
- Exceptional location, half a block off Market Street: BART/Muni/Bus/Rail
- Efficient and flexible floor plates
- Creative features throughout, exposed concrete floors + ceilings, operable copper-clad windows, exposed brick

Building Amenities

- Large secure bike storage with tool bench + pump
- Women & Men's showers
- Storage units

Building Dining Options

- The Treasury bar and restaurant
- Blue Bottle Coffee
- City Counter bar and restaurant



Building Information

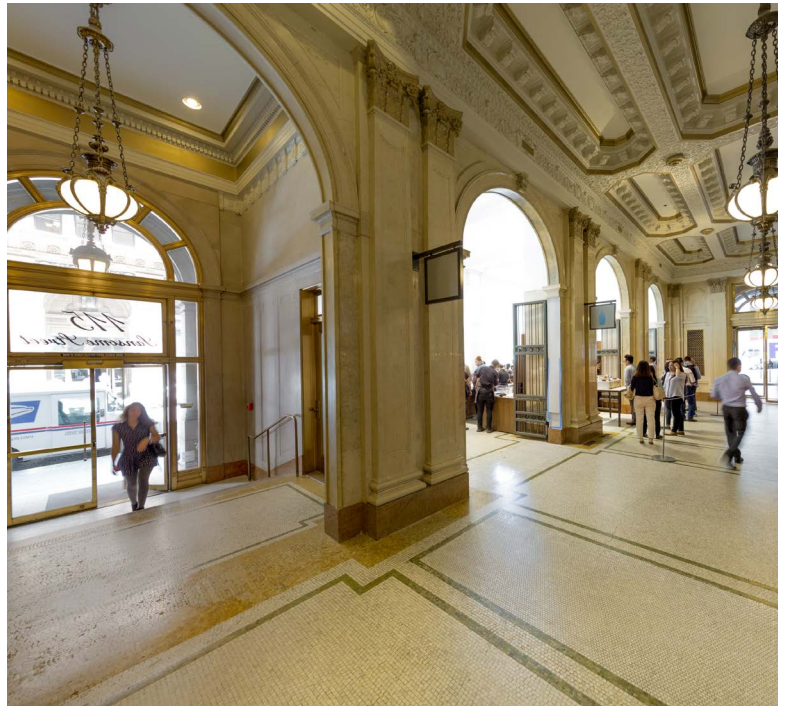


One of San Francisco's premier historic and creative office buildings.

Built in 1912 to be the headquarters for Standard Oil Company, 115 Sansome is a San Francisco landmark and an exquisite 19th century French Beaux-Arts masterpiece.

It has a total of 124,476 square feet of highly improved office and storage space with exceptional ground floor retail amenities including a sophisticated cocktail lounge and eatery, The Treasury and wildly-popular Blue Bottle Coffee, and City Counter bar and restaurant.

There are 14 stories with penthouse on the 15th floor. The property is located less than one block from Market Street, home to San Francisco's vast public transit network offering excellent connectivity to the entire Bay Area.



Local Amenities



DINING

- 1 Crocker Galleria (multiple)
- 2 Sam's Grill
- 3 Belden Place (multiple)
- 4 Yank Sing
- 5 The Salt House
- 6 Bob's Steak & Chophouse
- 7 Uno Dos Tacos
- 8 Hops & Hominy
- 9 Gitane
- 10 Gaspar Brasserie
- 11 Per Diem
- 12 Aquitaine

SHOPPING

- 1 Crocker Galleria
- 2 Maiden Lane
- 3 Target Express
- 4 Tiffany & Co.
- 5 Gump's
- 6 Graff Diamonds
- 7 Shreve & Co.
- 8 Saks 5th Avenue
- 9 Wilkes Bashford

HOTELS

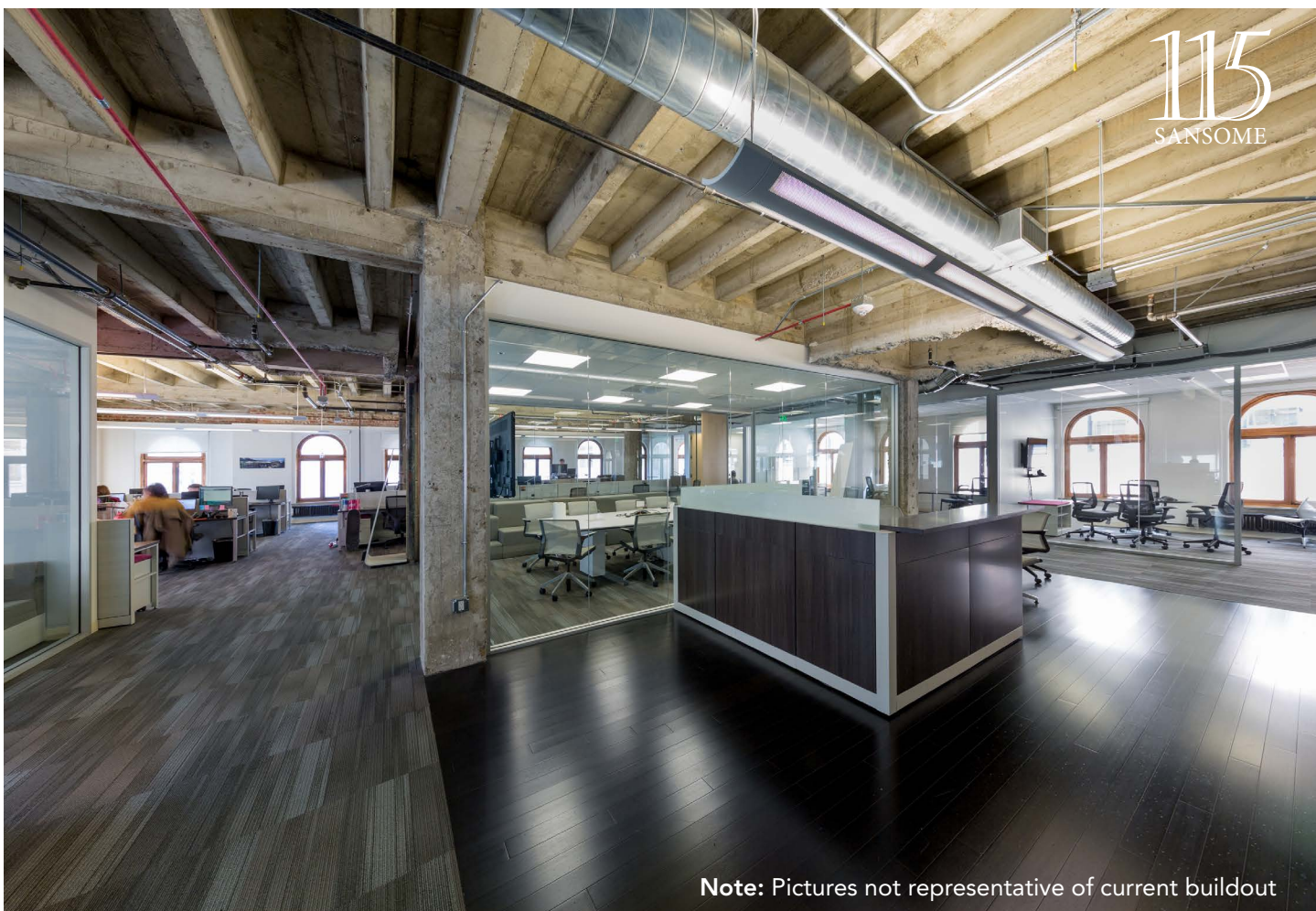
- 1 Ritz Carlton Residences
- 2 Palace Hotel
- 3 Loews Regency
- 4 Omni Hotel
- 5 Ritz-Carlton Hotel
- 6 Grand Hyatt

OUTDOORS

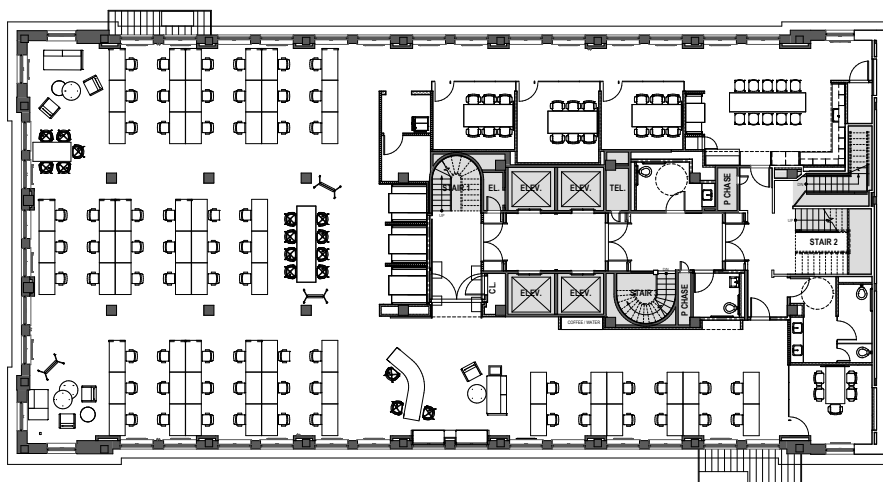
- 1 One Montgomery Terrace
- 2 McKesson Plaza
- 3 One Bush Plaza
- 4 Market Street Plaza
- 5 560 Mission Street Plaza
- 6 Union Square

FITNESS

- 1 24-Hour Fitness
- 2 Equinox
- 3 Rowclub
- 4 Satori Yoga Studio
- 5 Maiden Lane Studios
- 6 Maxwell Fitness
- 7 Crunch

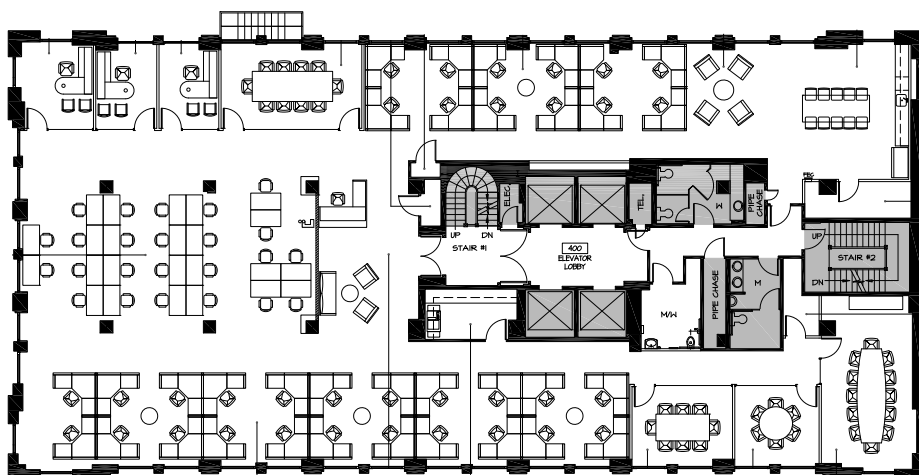
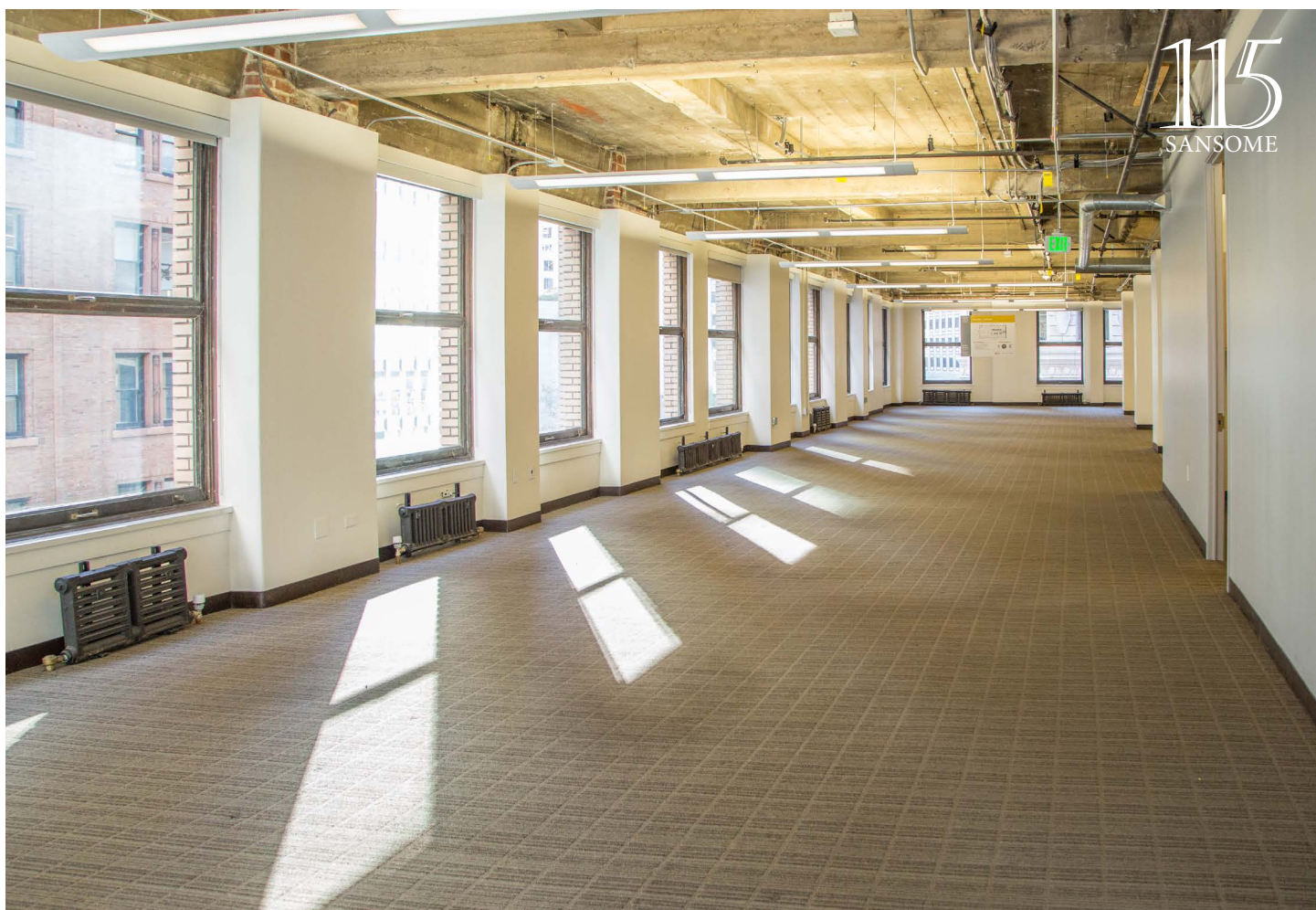


Note: Pictures not representative of current buildout



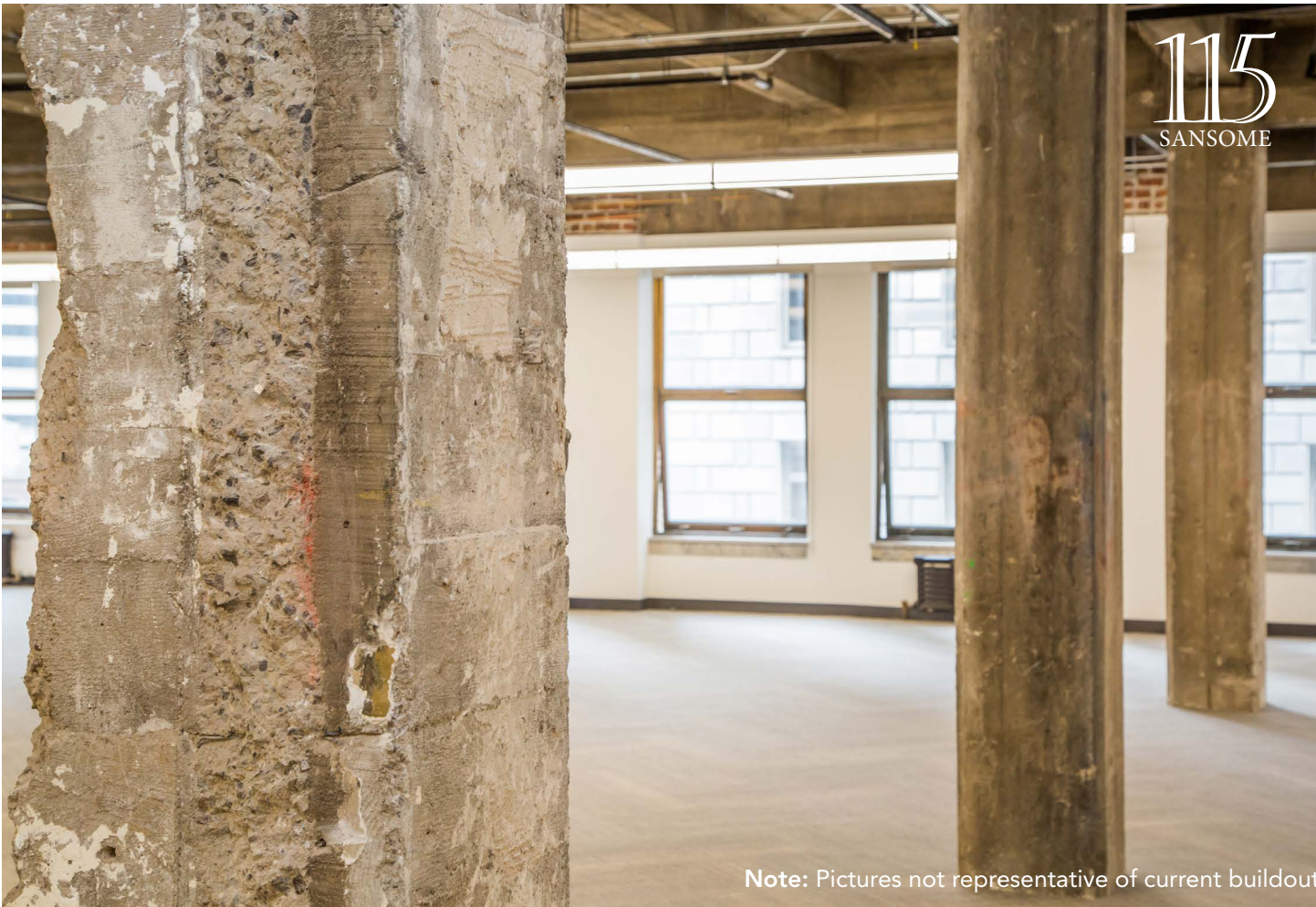
- Brand new full floor creative spec suite coming 2018
- Spec suite includes:
- Creative exposed ceiling and brick
- Large open area for +/- 65 workstations
- 4 meeting rooms
- Large open kitchen
- 3 Cafe style booths

SUITE 200 - 9,345 RSF

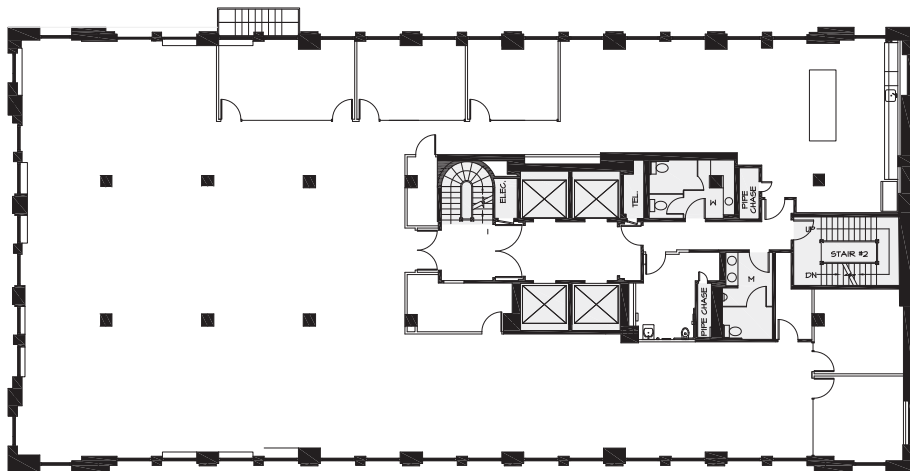


- Creative space with exposed ceiling and polished concrete
- Large open area for +/- 60 workstations
- 2 large conference rooms
- 2 medium conference rooms
- 3 private offices or smaller conference rooms

SUITE 400 - 9,345 RSF

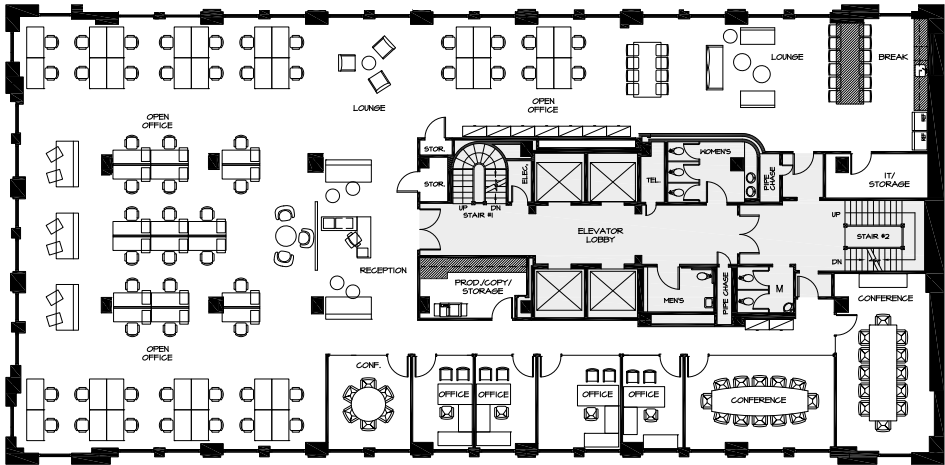
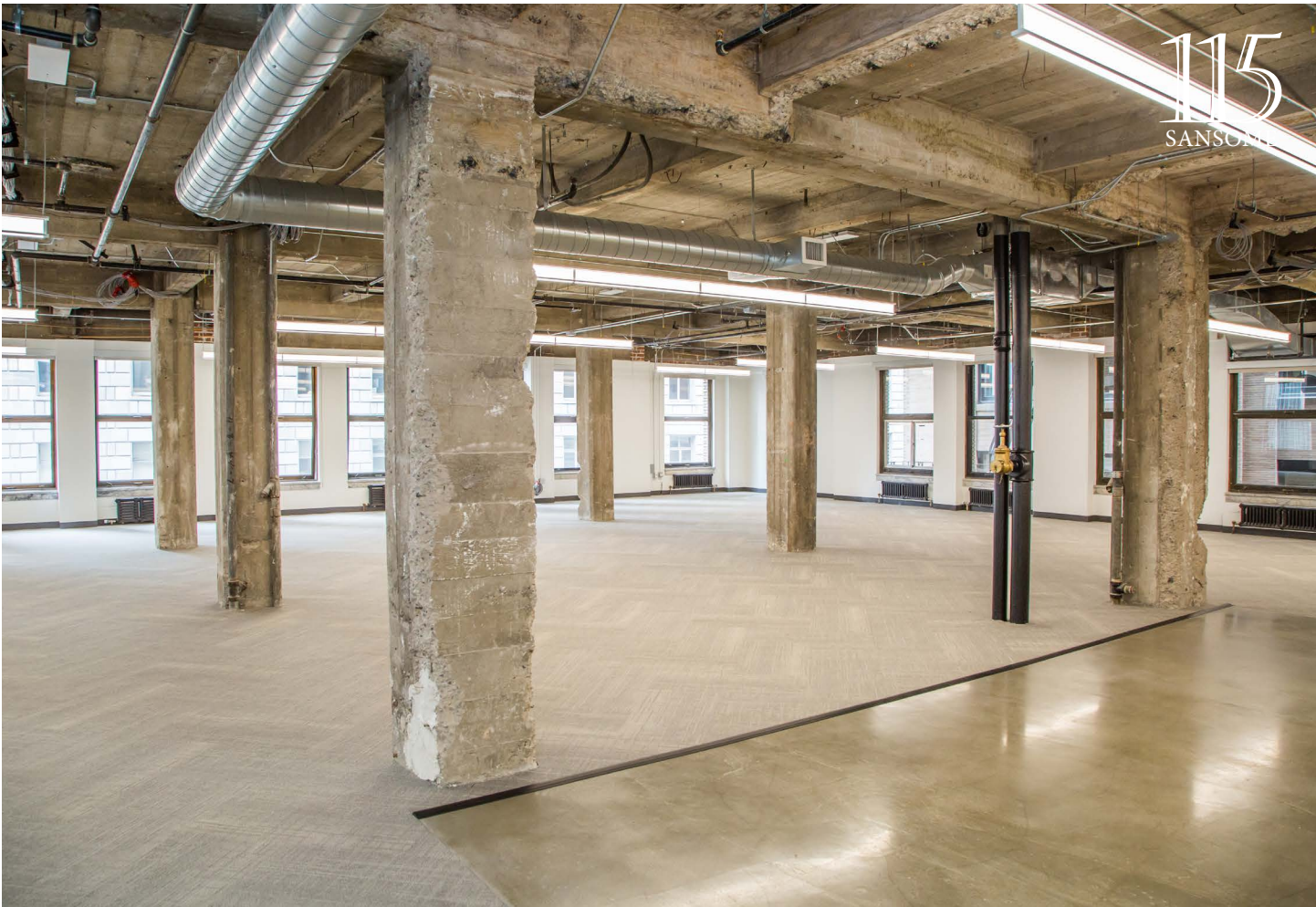


Note: Pictures not representative of current buildout



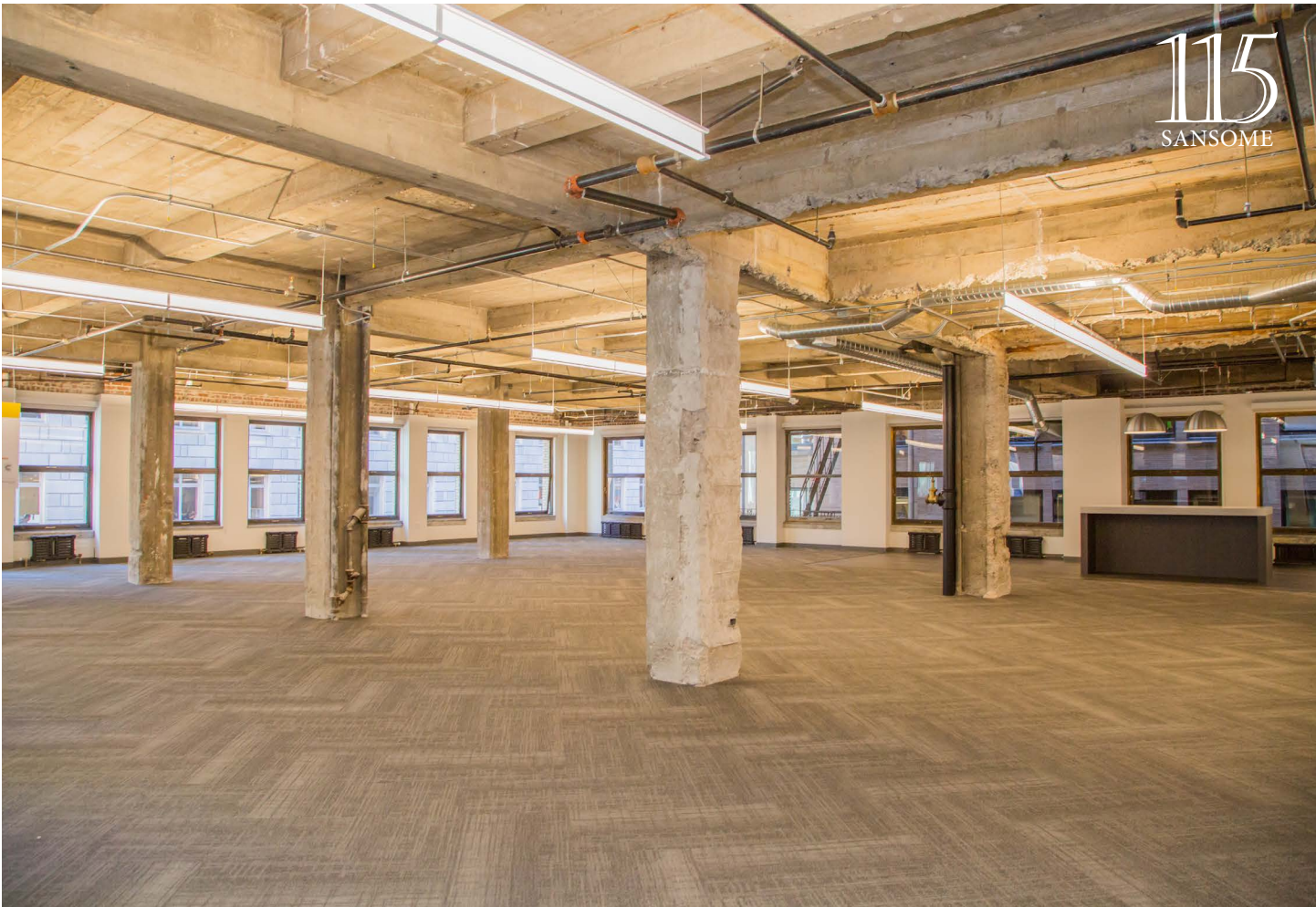
- Available in 30-60 Days
- Creative space with exposed ceiling and brick
- Large open area for +/- 80 workstations
- 1 large conference room
- 1 medium conference room
- 3 private offices or smaller conference rooms

SUITE 500 - 9,345 RSF

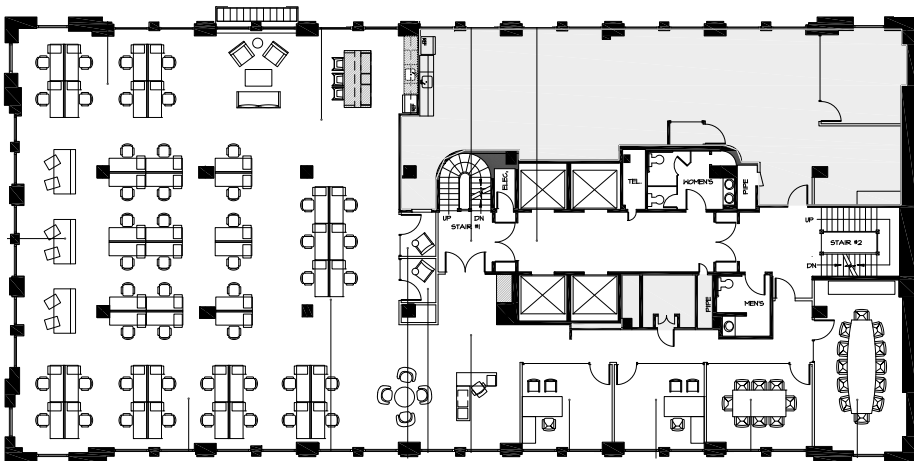


- Creative space with exposed ceiling and polished concrete
- Large open area for +/- 60 workstations
- Large open kitchen with large built-in island
- 2 Large conference rooms
- 4 private offices or 4-6 person conference rooms
- Move-in ready!

SUITE 600 - 9,351 RSF

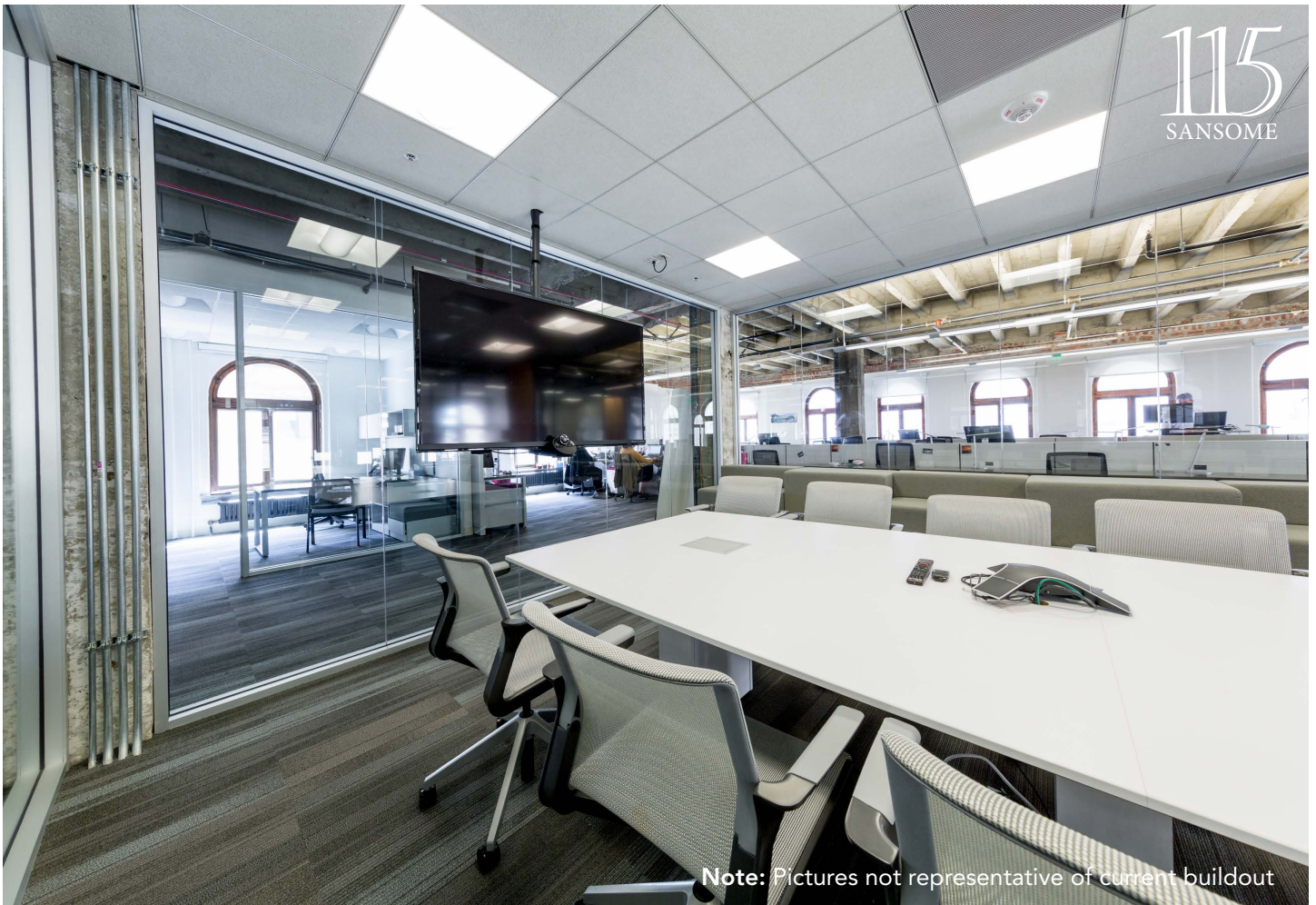


115
SANSOME

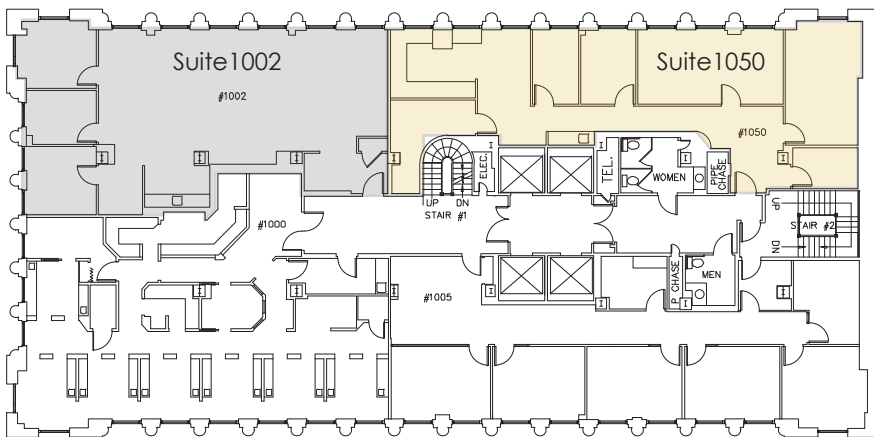


- Brand new spec suite!
- Exposed ceiling, brick and polished concrete
- Large open area for +/- 60 workstations
- 1 large conference room
- 3 medium conference rooms or private offices
- 2 phone rooms
- Move-in ready!

SUITE 800 - 7,284 RSF



Note: Pictures not representative of current buildout



SUITE 1050-2,019 RSF

- Available February 1, 2018
- Office intensive suite
- TI's available
- Will consider short term

SUITE 1002-2,093 RSF

- Available February 1, 2018
- 3 Offices or conference rooms
- Kitchenette
- Open area for +/- 20 workstations

SUITE 1002 - 2,093 RSF

SUITE 1050 - 2,019 RSF



MICHAEL DEMARIA
+1 415 395 7248
michael.demaria@am.jll.com
RE License #01366535

115
SANSOME

MATTHEW SHEWEY
+1 415 395 7255
matthew.shewey@am.jll.com
RE License #01445125

